

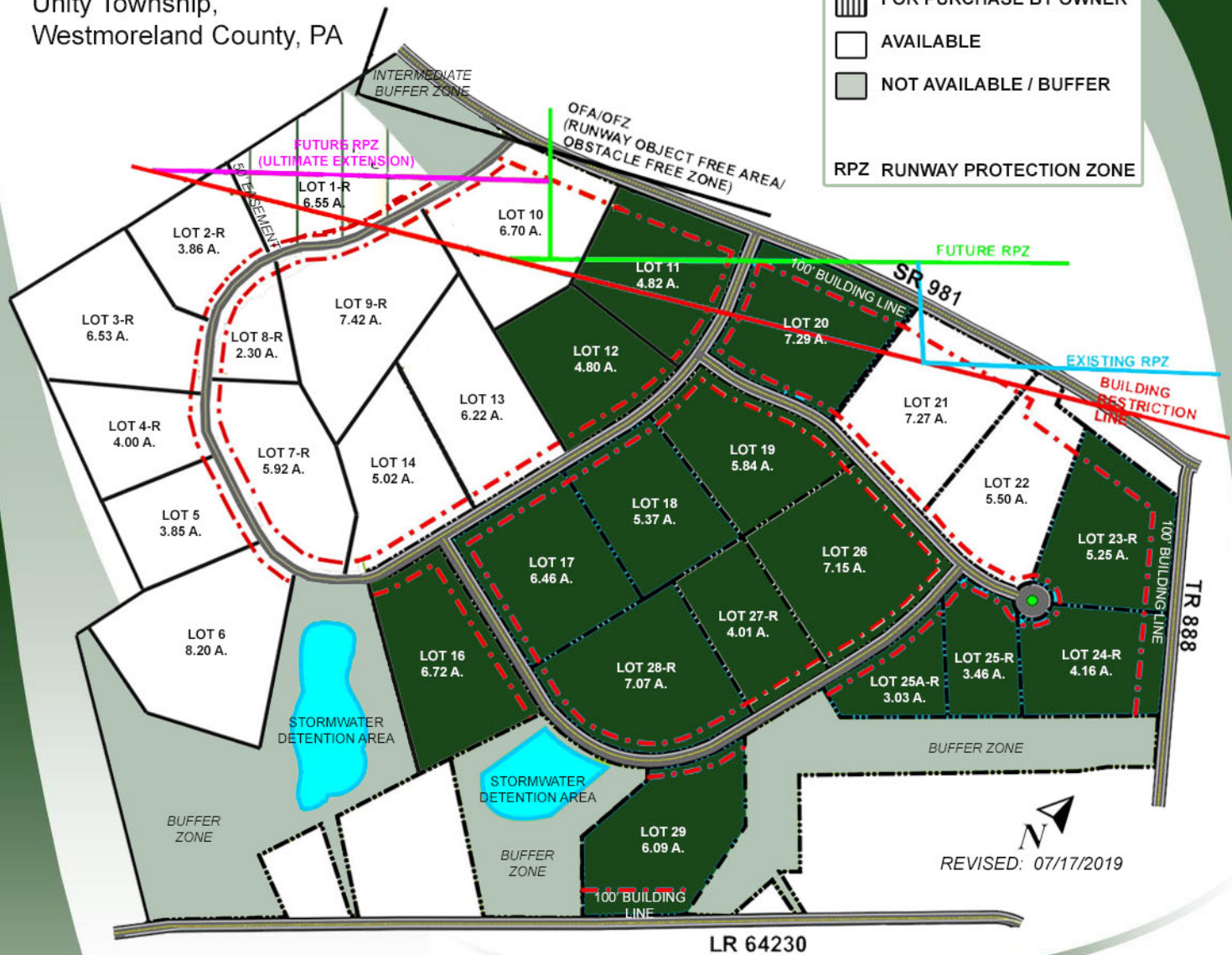
WESTMORELAND AIRPARK

Unity Township,
Westmoreland County, PA

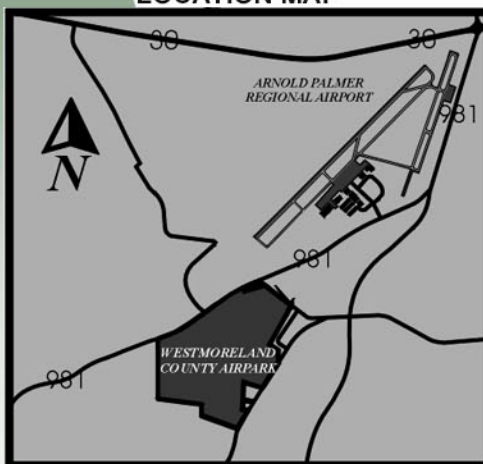
LOT STATUS

	SOLD
	FOR PURCHASE BY OWNER
	AVAILABLE
	NOT AVAILABLE / BUFFER

RPZ RUNWAY PROTECTION ZONE



LOCATION MAP



50% ACRES OPTIONED OR SOLD

LOTS SOLD

- LOT 1-R
- LOT 11
- LOT 12
- LOT 16
- LOT 17
- LOT 18
- LOT 19
- LOT 20
- LOT 23-R
- LOT 24-R
- LOT 25A-R
- LOT 25-R
- LOT 27-R, 28-R, 26
- LOT 29

COMPANY

- JDOLIVER, LLC *(AVAILABLE FOR PURCHASE BY OWNER)
- WESTMORELAND MECHANICAL TESTING & RESEARCH
- INDUSTRIAL TRACTOR PARTS
- RIDILLA DELMONT III
- PREMIUM PLASTIC SOLUTIONS LLC
- EFR FLEX BUILDING - 55 BAYHILL DRIVE
- EFR FLEX BUILDING - 45 BAYHILL DRIVE
- WESTMORELAND MECHANICAL TESTING & RESEARCH
- SIEM TOOL COMPANY
- MENASHA PACKAGING COMPANY
- HUNTING ENERGY SERVICES
- EFR WAREHOUSE - 106 TURNBERRY CIRCLE
- BRIDGE DECK SOLUTIONS
- LMC (LATROBE MACHINING CORPORATION)



Westmoreland County Industrial Development Corporation
Fifth Floor Suite 520 40 North Pennsylvania Avenue Greensburg, PA 15601
phone 724.830.3061 fax 724.830.3611 email wcidc@wpa.net

www.westmorelandcountyidc.org

WESTMORELAND COUNTY AIRPARK

Designated Pennsylvania Select Site



LOCATION:

Address: Route 981
Latrobe, Pennsylvania 15650

Municipality: Unity Township

Latitude: 40° 16'

Longitude: 79° 26'

DESCRIPTION:

Total Acreage: 210±

Sellable Acreage: 158.93 Acres

Number of Lots: 29

Maximum Lot Size: 8.20 Acres

Minimum Lot Size: 2.30

Acreage Available: 72.79

No. of Lots available: 14

Zoned: Light Industrial

Topography: Gently Sloping

TRANSPORTATION:

Nearest Highway: U.S. Route 30 – 2 miles
PA Turnpike, New Stanton – 11 miles

Nearest Airport: Arnold Palmer Regional Airport – adjacent

Rail Accessible: No

Closest Port: Pittsburgh

UTILITIES:

Electric: West Penn Power Company

Service: 12.5 kV primary service though the park

Gas: Peoples Natural Gas

Gas Line Size: 4” Interior Gasoline

Water: Municipal Authority of Westmoreland County

Water Line Size: 12” Interior Waterline

Sewage: Unity Township Municipal Authority

Fiber Optic: Yes

GENERAL INFORMATION:

2019

Millage Rate: Unity Twp. – 107.44 mills

Nearest Fire Company: Pleasant Unity – 1 mile

Distance to Landfill: 10 miles

SALE/LEASE:

Sale: \$35,000 per acre

CONTACT:



Joseph D. Sisley – Marketing Director
Alicia Henry – Marketing Coordinator
(724) 830-3061
Email: wcidc@wpa.net
www.westmorelandcountyidc.org

NOTE: Information shown is purported to be from reliable sources. No representation is made to the accuracy thereof, and is submitted subject to errors, omissions, change in price, prior sale, withdrawal notice, or other conditions.

The SMART CHOICE
... for your business experience

