

JEANNETTE INDUSTRIAL PARK

City of Jeannette,
Westmoreland County, PA



REVISED: 07/17/19

BUILDING STATUS

	LEASED/SOLD
	SHORT-TERM LEASED/OPTIONED
	AVAILABLE
	COMMON AREA

100% BUILDING LEASED

BUILDINGS

LEASED

	SQ. FT.
102	50,095
108	55,019
200A&B & 300A&B	39,463
500A & 700A&B	31,922
500B	15,731
500C	4,800

COMPANY

JEANNETTE SPECIALTY GLASS/
OCEANA (SUBLEASE)
CATCH-UP LOGISTICS
TECH 2000 WOODWORKS
CASEWORKS INC.
RYAN MOVING LLC
HATCH-MDS, INC.

BUILDINGS

AVAILABLE

	SQ. FT.
600	14,022

LOTS SOLD

LOT A2
LOT 3
LOT 4,5,7

COMPANY

DISTINCT CREATIVE AGENCY
DISTRICT COURT 10-1-01
EXCEL GLASS

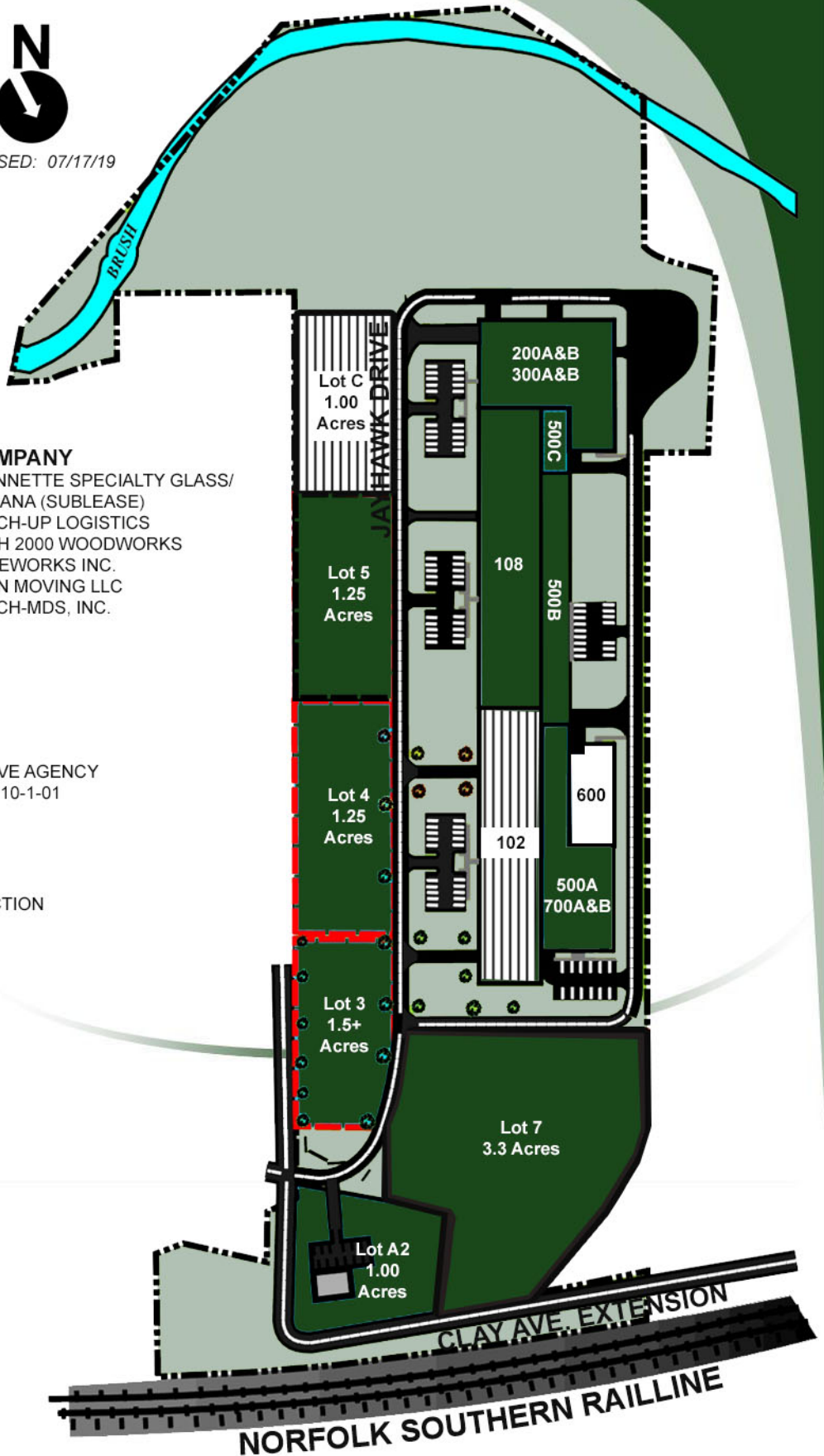
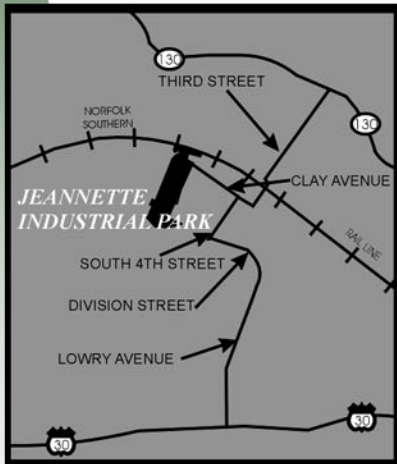
LOTS OPTIONED

LOT C

COMPANY

TODD CONSTRUCTION

LOCATION MAP



Westmoreland County Industrial Development Corporation
Fifth Floor Suite 520 40 North Pennsylvania Avenue Greensburg, PA 15601
phone 724.830.3061 fax 724.830.3611 email wcidc@wpa.net

www.westmorelandcountyidc.org

JEANNETTE INDUSTRIAL PARK



LOCATION:

Address: 9th and Clay Avenue
Jeannette, Pennsylvania 15644

Municipality: City of Jeannette

Latitude: 40° 19' 30"

Longitude: 40° 37' 30"

DESCRIPTION:

Building Type: Industrial
Warehouse/Distribution

Area of Building:

- a. Total: 212,019 sq. ft.
- b. Phase I: 127,809 sq. ft.
- c. Phase II: 84,210 sq. ft.

Floor Type: Reinforced Concrete

Construction Type: Stone and Brick

Roof Type: Metal

Ceiling Heights: 19'

Truck Doors: 1 Docks; 1 Drive-in (Bldg. 100A)
2 Docks; 1 Drive-in (Bldg. 100B)

Number of Floors: 1

Acreage Available: 1.0±

Number of Lots: 2

Minimum Lot Size: 1.5 Acres (could be altered)

Maximum Lot Size: 3.4 Acres (could be altered)

Zoned: Light Industrial

Topography: Flat

TRANSPORTATION:

Nearest Highway: U.S. Route 30 – 1.5 miles
PA Turnpike, Irwin – 6 miles

Nearest Airport: Arnold Palmer Regional
Airport – 13 miles

Rail Accessible: No

Closest Port: Pittsburgh

UTILITIES:

Electric: West Penn Power Company

Service: 7.2 kV Primary single phase on site

Gas: Columbia Gas

Water: Municipal Authority of
Westmoreland County

Water Line Size: 8" throughout park

Sewage: Municipal Authority of
Westmoreland County

Fiber Optic: Yes

GENERAL INFORMATION:

2019

Millage Rates: Jeannette – 142.61 mills

Nearest Fire Company: Jeannette – less than one mile

Distance to Landfill: 6 miles

SALE/LEASE:

Building:

- Lease: \$2.75 per square foot net, net, net

Land:

- Sale: \$25,000 per acre

CONTACT:

Joseph D. Sisley – Marketing Director
Alicia Henry – Marketing
Coordinator
(724) 830-3061
Email: wcidc@wpa.net
www.westmorelandcountyyidc.org



NOTE: Information shown is purported to be from reliable sources. No representation is made to the accuracy thereof, and is submitted subject to errors, omissions, change in price, prior sale, withdrawal notice, or other conditions.

**The SMART
CHOICE**
... for your business expansion!