

JEANNETTE INDUSTRIAL PARK

City of Jeannette,
Westmoreland County, PA



REVISED: 09/17/14

BUILDING STATUS

	LEASED/SOLD
	SHORT-TERM LEASED/OPTIONED
	AVAILABLE
	COMMON AREA

92% BUILDING LEASED

BUILDINGS

LEASED

	SQ. FT.	COMPANY
100A	20,000 (50,095)	DeLALLO'S (SHORT-TERM)
100B	30,000 (55,019)	DeLALLO'S (SHORT-TERM)
200A&B & 300A&B	39,783	TECH 2000 WOODWORKS
500A & 700A&B	26,000 (31,922)	CASEWORKS INC.
500C	5,030	HATCH-MDS, INC.
600	14,058	MISTRAS GROUP

BUILDINGS AVAILABLE

	SQ. FT.
500B	16,112

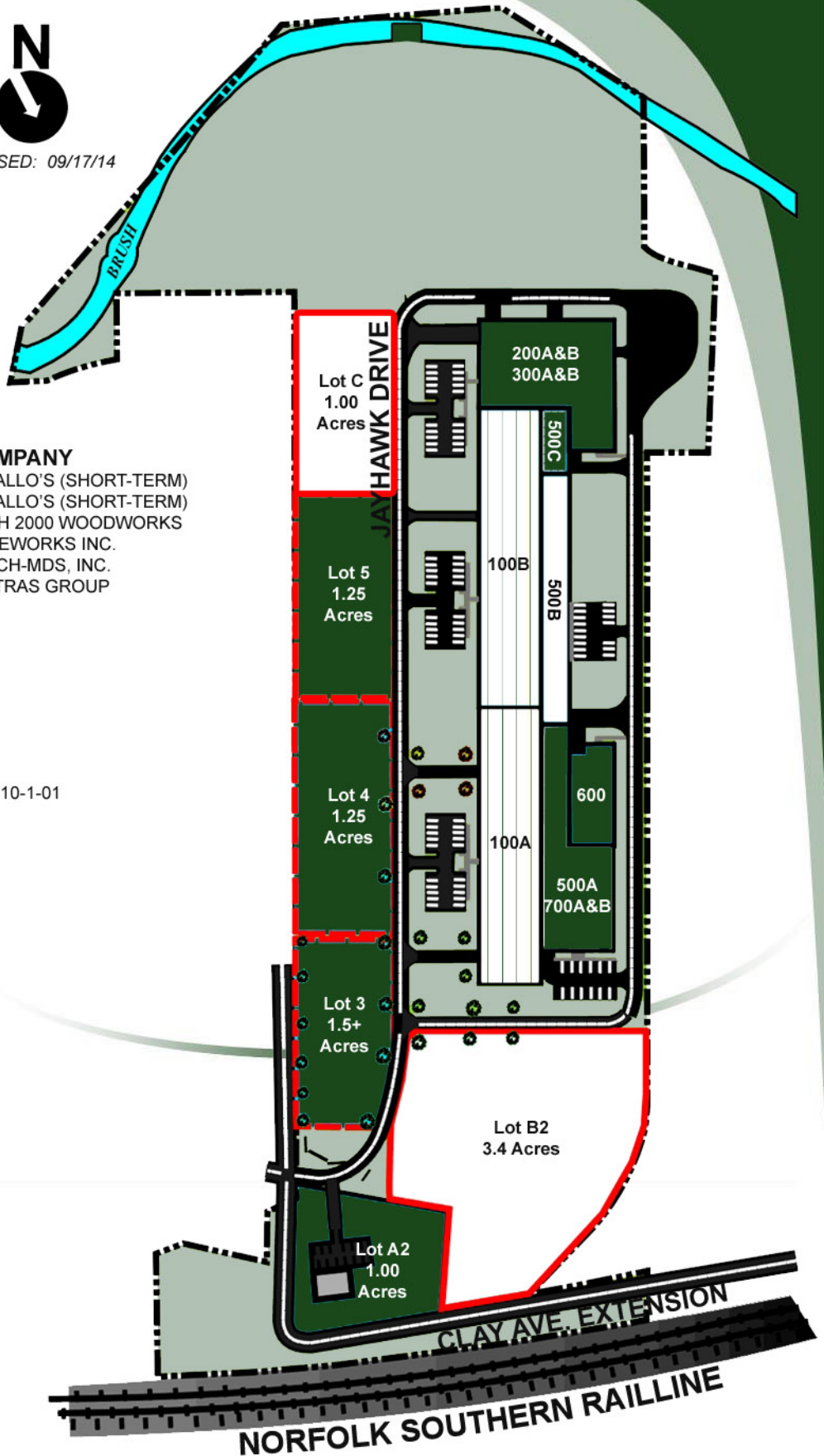
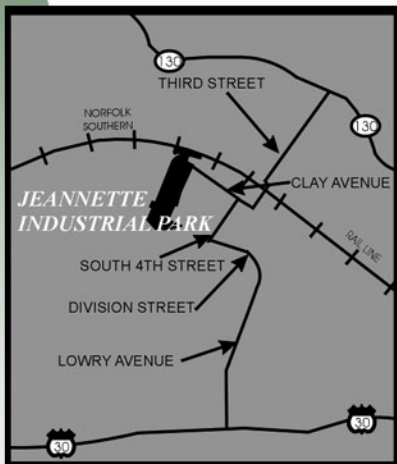
LOTS SOLD

LOT	COMPANY
LOT A2	DIMENSION X
LOT 3	DISTRICT COURT 10-1-01
LOT 4 & 5	EXCEL GLASS

LOTS OPTIONED

COMPANY

LOCATION MAP



Westmoreland County Industrial Development Corporation
Fifth Floor | Suite 520 | 40 North Pennsylvania Avenue | Greensburg, PA 15601
phone 724.830.3061 | fax 724.830.3611 | email wcidc@wpa.net

www.westmorelandcountyidc.org

JEANNETTE INDUSTRIAL PARK



LOCATION:

Address: 9th and Clay Avenue
Jeannette, Pennsylvania 15644

Municipality: City of Jeannette

Latitude: 40° 19' 30"

Longitude: 40° 37' 30"

DESCRIPTION:

Building Type: Industrial
Warehouse/Distribution

Area of Building:

- a. Total: 212,019 sq. ft.
- b. Phase I: 127,809 sq. ft.
- c. Phase II: 84,210 sq. ft.
- d. Available: 50,095 sq. ft. (Bldg. 100A) Short-Term Occupant
55,019 sq. ft. (Bldg. 100B) Short-Term Occupant
16,112 sq. ft. (Bldg. 500B)

Floor Type: Reinforced Concrete

Construction Type: Stone and Brick

Roof Type: Metal

Ceiling Heights: 19'

Truck Doors: 1 Docks; 1 Drive-in (Bldg. 100A)
2 Docks; 1 Drive-in (Bldg. 100B)

Number of Floors: 1

Acreage Available: 4.4±

Number of Lots: 2

Minimum Lot Size: 1.5 Acres (could be altered)

Maximum Lot Size: 3.4 Acres (could be altered)

Zoned: Light Industrial

Topography: Flat

TRANSPORTATION:

Nearest Highway: U.S. Route 30 – 1.5 miles
PA Turnpike, Irwin – 6 miles

Nearest Airport: Arnold Palmer Regional
Airport – 13 miles

Rail Accessible: No

Closest Port: Pittsburgh

UTILITIES:

Electric: West Penn Power Company

Service: 7.2 kV Primary single phase on site

Gas: Columbia Gas

Water: Municipal Authority of
Westmoreland County

Water Line Size: 8" throughout park

Sewage: Jeannette Municipal Authority

Fiber Optic: Yes

GENERAL INFORMATION:

2014

Millage Rates: Jeannette – 136.33 mills

Nearest Fire Company: Jeannette – less than one mile

Distance to Landfill: 6 miles

SALE/LEASE:

Building:

- Lease: \$2.50 per square foot net, net, net

Land:

- Sale: \$25,000 per acre

CONTACT:



Joseph D. Sisley – Marketing Director
Ben Wentzel – Business Development
Director
(724) 830-3061
Email: wcidc@wpa.net
www.westmorelandcountyidc.org

NOTE: Information shown is purported to be from reliable sources. No representation is made to the accuracy thereof, and is submitted subject to errors, omissions, change in price, prior sale, withdrawal notice, or other conditions.

**The SMART
CHOICE**
... for your business expansion!