

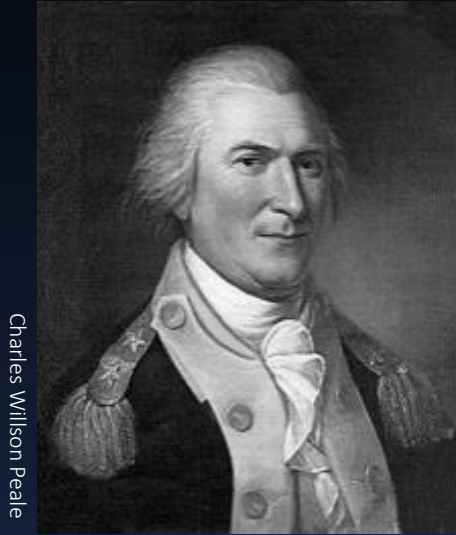


# **Westmoreland County Hall of Fame**

**People, Places and Things that  
made Westmoreland County**

- **Content added monthly**

# Westmoreland County Hall of Fame



Charles Willson Peale

Arthur St. Clair

3/23/1737 – 8/31/1818  
Great Britain Greensburg, PA

Arthur St. Clair served in the British Army during the French and Indian War and rose to the rank of Major General in the Continental Army during the Revolutionary War. He was instrumental in convincing the Penn Proprietary Government that a new country should be created west of the Allegheny Mountains (Westmoreland).

He settled in Ligonier Valley in 1764 and was, at one time, the largest land owner in western Pennsylvania. Arthur St. Clair served as president of the Continental Congress in 1787, which, at that time, was the highest national office under the Articles of Confederation (before the U.S. Constitution was ratified).

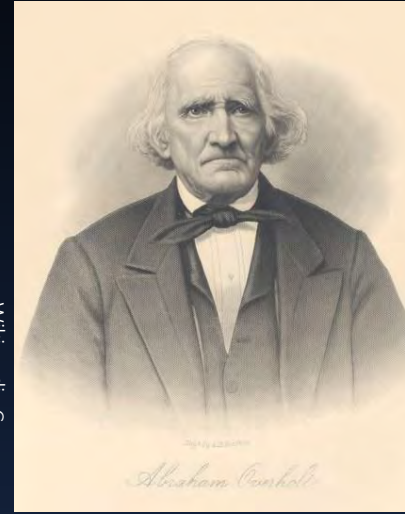


Westmoreland County

Robert Hanna

1738 – 1786  
Ulster, Northern Ireland Hanna's Town

Robert Hanna acquired the land for Hanna's Town in 1769 in what is now Hempfield Township. In 1773, Hanna's Town became the first county seat of Westmoreland and hosted the 1<sup>st</sup> English courts west of the Allegheny Mountains. He was appointed one of the first justices of Westmoreland County.



Wikimedia Commons

Abraham Overholt

4/19/1784 – 1/15/1870  
Bucks County, PA Scottdale, PA

Abraham Overholt was the first producer of Rye whiskey in Pennsylvania. Abraham Overholt and Company produced Old Overholt<sup>®</sup> Straight Rye Whiskey (for commercial use) from 1810-1919. Abraham Overholt is grandfather to Henry Clay Frick.



Bain News Service

Henry Clay Frick

12/19/1849 - 12/2/1919  
West Overton, PA New York, NY

Henry Clay Frick founded the H. C. Frick & Company coke manufacturing Company. He financed the construction of the Reading Company and the Pennsylvania Railroad. Henry Clay Frick served as Chairman of the Carnegie Steel Company.



**Hanna J. Patterson**

11/5/1879 – 9/21/1937  
Smithton, PA Pittsburgh, PA

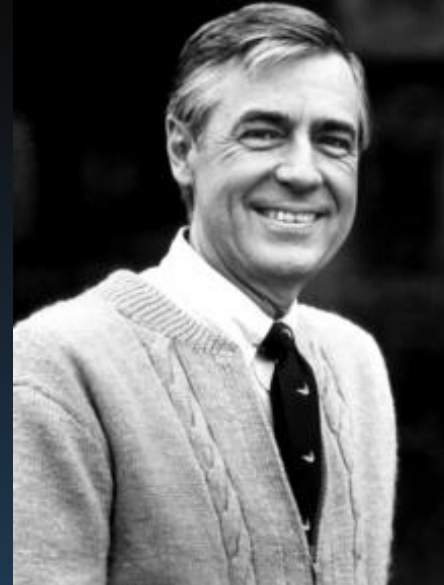
Hanna Patterson worked for the National American Women Suffrage Association and a graduate of Wilson College. For her service as a member of the Council of National Defense, she won a Distinguished Service Medal.



**Leonard H Goldenson**

12/7/1905 – 12/27/1999  
Scottsdale, PA Sarasota, FL

Leonard Goldenson was founder and president of the United States-based television network American Broadcasting Company (ABC), from 1953 to 1986.



**Fred Rogers**

3/20/1928 – 2/27/03  
Latrobe, PA Pittsburgh, PA

Fred Rogers was an author, producer, Presbyterian Minister and television host. Recipient of the Presidential Medal of Freedom in 1997, and a Lifetime Achievement Emmy in 1999.



**Arnold Palmer**

9/10/29 – 9/25/16  
Latrobe, PA Pittsburgh, PA

Arnold Palmer was a professional golfer, golf course designer, and owner. Recipient of the Presidential Medal of Freedom in 2004, and the Congressional Gold Medal in 2009.



CBS Television

Jill Corey  
9/30/1935- 4/3/2021  
Avonmore, PA Pittsburgh, PA

At 17, Jill Corey became the youngest performer ever at the Copacabana nightclub. She worked on television with Ed Sullivan, Johnny Carson and had her own radio and television shows.

Jill Corey was married to Pittsburgh Pirates third basemen, Don Hoak.



American Broadcasting Company

Shirley Mae Jones  
Born 3/31/1934  
Charleroi, PA

Shirley grew up in Smithton. In the 1950's and 1960's Shirley Jones performed on stage for Rodgers and Hammerstein. In 1970 Jones auditioned for the Partridge Family. This role skyrocketed her to fame. During its first season The Partridge Family was screened in over seventy countries.

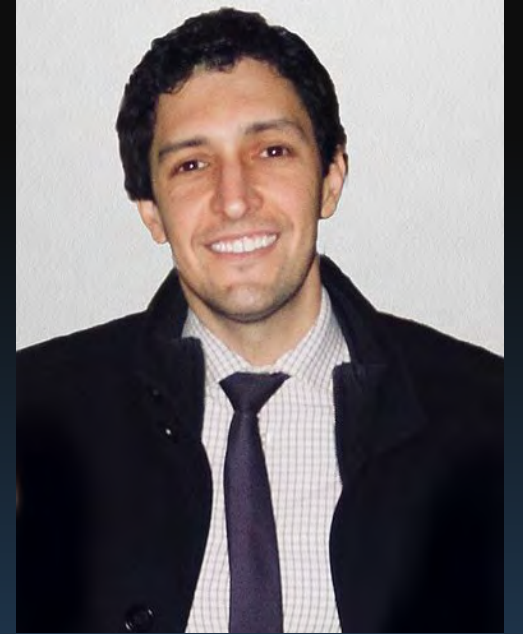


NASA

Chester Lee  
4/6/1919 –2/23/2000  
Derry, PA McLean, VA

“Houston, we have a problem”  
On the receiving end of that statement was Latrobe High school graduate Chester Lee. After a 27 year Naval career, Chester Lee was the mission director on the NASA teams to the final 6 Apollo moon missions.

Lee received three Distinguished Service Medals, two exceptional Service Medals, an outstanding leadership medal, and the Naval Academy's Distinguished Graduate Award.



KMPoll

Steve Mears  
Born 1/22/1980  
Murrysville, PA

In 2017 Steve Mears was named the play-by-play television announcer for on AT&T SportsNet for the Pittsburgh Penguins.

Starting as the Bowling Green State University Falcon's announcer, Mears was the voice of the Bossier-Shreveport Mudbugs, the New York Islanders and host of NHL Now. Steve Mears was named the Central Hockey League Broadcaster of the Year in 2005



Arthur Rothstein - Farm Security Administration

## Norvelt

"Westmoreland Homesteads" was founded in 1934 and renamed in 1937 to honor Eleanor Roosevelt. During the Great Depression the federal government designed Norvelt as a model community and was built to increase the standard of living of laid-off coal miners.

254 families received homes that consisted of an 1.5 story Cape Cod home. They were available in 4-6 room models. The homes included a living room, bedroom, bathroom, utility room and eat in kitchen. These homes sold for \$2,131.28 this was  $\frac{1}{4}$  of the purchasers income of \$850. Over 1,850 families applied for the government properties.

In addition to the homes the community included a cooperative farm, a schoolhouse, playground, and post office.

Today Norvelt has a population of almost 900.



Nyttend

## Vandergrift

In 1895, Apollo Iron and Steel Vandergrift designed a model industrial town Vandergrift (Named for Capt. J.J. Vandergrift, a director of the steel company). The Olmsted firm designed the new community that was to provide for the needs of the company workers. This kind of town was referred to as a company town. Company towns were common to industries such as coal, metal mines and lumber.

By the 1920's company towns started their decline due to better wages and the accessibility to automobiles allowed worker to seek jobs outside of their communities.

Today Vandergrift is hosting a small business comeback with breweries, coffee shops and boutiques.